

MILLING HEADS

THE WHOLE WORLD OF PRECISION.



GANTRY MILLING MACHINES

EXCELLENT QUALITY OF MOTION CONTROL.

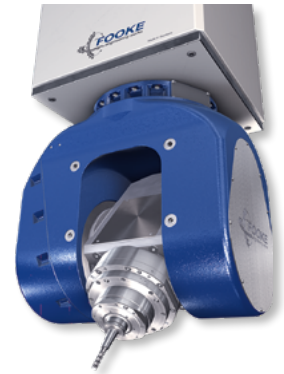
MILLING HEAD DATA

C-axis (Milling head rotary axis)

Pivoting angle:	550° (+/-275°)
Pivoting torque:	570 Nm
Clamping torque:	3,000 Nm
Revolution:	360°/s
Axis acceleration:	1,200°/s ²
Position accuracy:	15" (0.0041°)
Position deviation:	10" (0.0027°)

A-axis (Spindle pivoting axis)

Pivoting angle:	220° (+/-110°)
Pivoting torque:	570 Nm
Clamping torque:	2,000 Nm
Revolution:	360°/s
Axis acceleration:	1,200°/s ²
Position accuracy:	15" (0.0041°)
Position deviation:	10" (0.0027°)



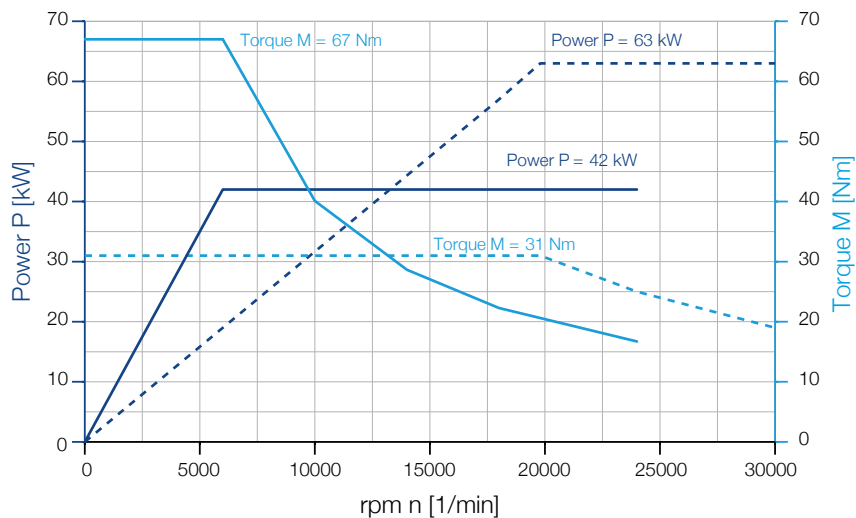
TORQUE MOTORS IN C- AND A-AXIS

DIRECT MEASURING SYSTEM IN C- AND A-AXIS

OPTIONALLY AVAILABLE WITH SUCTION AROUND THE SPINDLE

SPINDLE DATA

High-frequency milling spindle	Tool holding fixture	max. Power [kW]	max. rpm [1/min]	max. Torque [Nm]
HF-Milling spindle —	HSK-A63	42	24,000	67
HF-Milling spindle - - - -	HSK-A63	63	30,000	31



S1 100% DC

Milling spindles with other performances data on request

MILLING HEAD DATA

C-axis (Milling head rotary axis)

Pivoting angle:	550° (+/-275°)
Pivoting torque:	1,500 Nm
Clamping torque:	6,000 Nm
Revolution:	70°/s
Axis acceleration:	800°/s ²
Position accuracy:	15" (0.0041°)
Position deviation:	10" (0.0027°)

A-axis (Spindle pivoting axis)

Pivoting angle:	220° (+125°/-95°)
Pivoting torque:	1,500 Nm
Clamping torque:	6,000 Nm
Revolution:	70°/s
Axis acceleration:	800°/s ²
Position accuracy:	15" (0.0041°)
Position deviation:	10" (0.0027°)

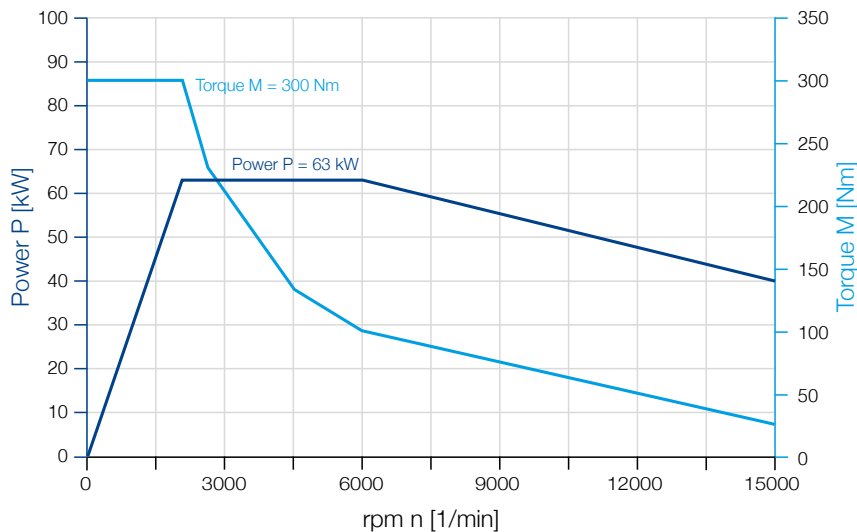


PRECISION WORM GEAR
IN C- AND A-AXIS

DIRECT MEASURING SYSTEM
IN C- AND A-AXIS

SPINDLE DATA

High-frequency milling spindle	Tool holding fixture	max. Power [kW]	max. rpm [1/min]	max. Torque [Nm]
HF-Milling spindle —	HSK-A100	63	15,000	300



S1 100% DC

Milling spindles with other performances data on request

MILLING HEAD DATA

C-axis (Milling head rotary axis)	
Pivoting angle:	550° (+/-275°)
Pivoting torque:	3,000 Nm
Clamping torque:	6,000 Nm
Revolution:	360°/s
Axis acceleration:	800°/s ²
Position accuracy:	15" (0.0041°)
Position deviation:	10" (0.0027°)

A-axis (Spindle pivoting axis)	
Pivoting angle:	220° (+/-110°)
Pivoting torque:	3,000 Nm
Clamping torque:	6,000 Nm
Revolution:	360°/s
Axis acceleration:	800°/s ²
Position accuracy:	15" (0.0041°)
Position deviation:	10" (0.0027°)

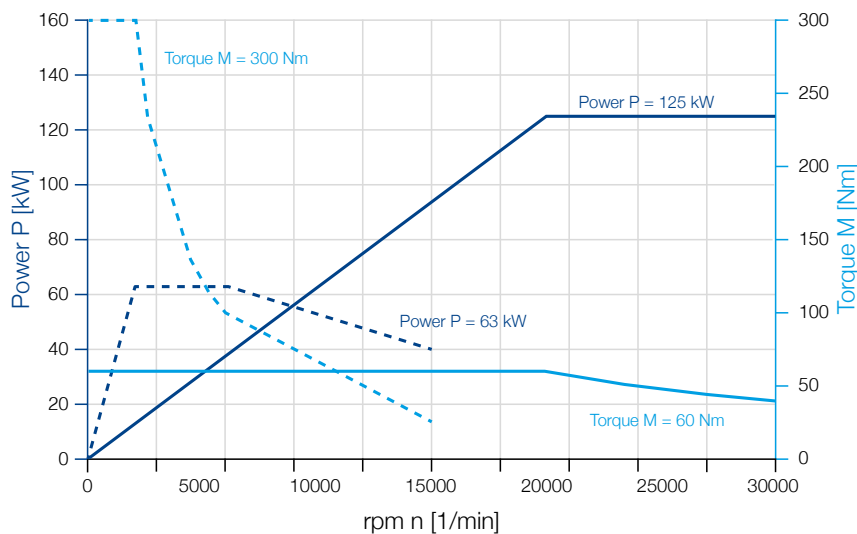


TORQUE MOTORS
IN C- AND A-AXIS

DIRECT MEASURING SYSTEM
IN C- AND A-AXIS

SPINDLE DATA

High-frequency milling spindle	Tool holding fixture	max. Power [kW]	max. rpm [1/min]	max. Torque [Nm]
HF-Milling spindle ———	HSK-A63	125	30.000	60
HF-Milling spindle - - - -	HSK-A100	63	15.000	300



S1 100% DC
Milling spindles with
other performances
data on request

MILLING HEAD DATA

C-axis (Milling head rotary axis)	
Pivoting angle:	550° (+/-275°)
Pivoting torque:	800 Nm
Clamping torque:	1,600 Nm
Revolution:	60°/s
Axis acceleration:	600°/s ²
Position accuracy:	15" (0.0041°)
Position deviation:	10" (0.0027°)

A-axis (Spindle pivoting axis)	
Pivoting angle:	220° (+/-110°)
Pivoting torque:	800 Nm
Clamping torque:	1,600 Nm
Revolution:	60°/s
Axis acceleration:	600°/s ²
Position accuracy:	15" (0.0041°)
Position deviation:	10" (0.0027°)



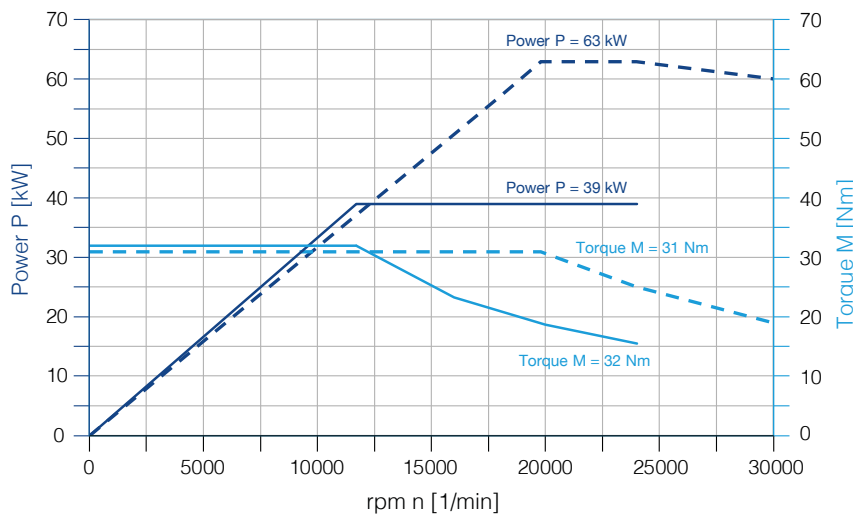
TORQUE MOTORS
IN C- AND A-AXIS

DIRECT MEASURING SYSTEM
IN C- AND A-AXIS

WITH INTEGRATED
SUCTION UNIT

SPINDLE DATA

High-frequency milling spindle	Tool holding fixture	max. Power [kW]	max. rpm [1/min]	max. Torque [Nm]
HF-Milling spindle ———	HSK-A63	39	24,000	32
HF-Milling spindle - - - -	HSK-A63	63	30,000	31



S1 100% DC

Milling spindles with
other performances
data on request

MILLING HEAD DATA

C-axis (Milling head rotary axis)

Pivoting angle:	550° (+/-275°)
Pivoting torque:	350 Nm
Clamping torque:	760 Nm
Revolution:	300°/s
Axis acceleration:	600°/s ²
Position accuracy:	15" (0,0041°)
Position deviation:	10" (0,0027°)

A-axis (Spindle pivoting axis)

Pivoting angle:	220° (+/-110°)
Pivoting torque:	350 Nm
Clamping torque:	840 Nm
Revolution:	300°/s
Axis acceleration:	600°/s ²
Position accuracy:	15" (0,0041°)
Position deviation:	10" (0,0027°)

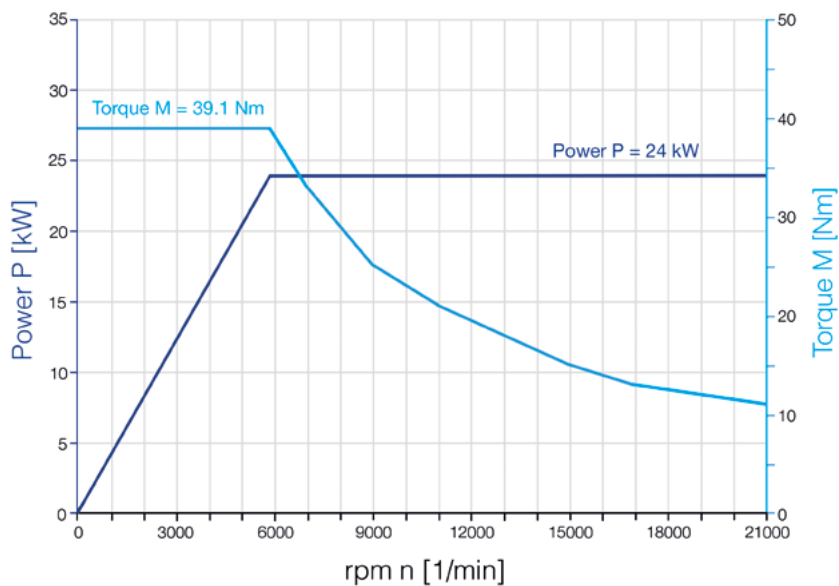


TORQUE MOTORS IN C- AND A-AXIS

DIRECT MEASURING SYSTEM IN C- AND A-AXIS

SPINDLE DATA

High-frequency milling spindle	Tool holding fixture	max. Power [kW]	max. rpm [1/min]	max. Torque [Nm]
HF-Milling spindle	HSK-A63	24	21,000	39.1



S1 100% DC

Milling spindles with other performances data on request

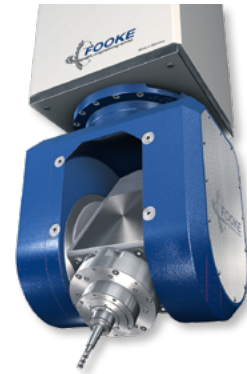
MILLING HEAD DATA

C-axis (Milling head rotary axis)

Pivoting angle:	550° (+/-275°)
Pivoting torque:	350 Nm
Clamping torque:	840 Nm
Revolution:	300°/s
Axis acceleration:	600°/s ²
Position accuracy:	15" (0.0041°)
Position deviation:	10" (0.0027°)

A-axis (Spindle pivoting axis)

Pivoting angle:	220° (+/-110°)
Pivoting torque:	350 Nm
Clamping torque:	840 Nm
Revolution:	300°/s
Axis acceleration:	600°/s ²
Position accuracy:	15" (0.0041°)
Position deviation:	10" (0.0027°)



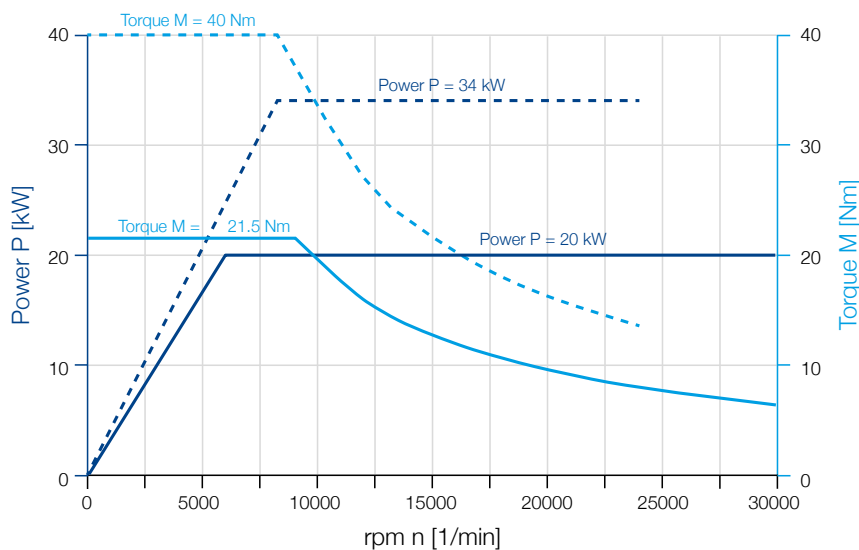
TORQUE MOTORS
IN C- AND A-AXIS

DIRECT MEASURING SYSTEM
IN C- AND A-AXIS

OPTIONALLY AVAILABLE WITH
SUCTION AROUND THE SPINDLE

SPINDLE DATA

High-frequency milling spindle	Tool holding fixture	max. Power [kW]	max. rpm [1/min]	max. Torque [Nm]
HF-Milling spindle ———	HSK-A63	20	30,000	21.5
HF-Milling spindle - - - -	HSK-A63	34	24,000	40



S1 100% DC

Milling spindles with
other performances
data on request

MILLING HEAD DATA

C-axis (Milling head rotary axis)

Pivoting angle:	550° (+/-275°)
Pivoting torque:	2,500 Nm
Clamping torque:	5,500 Nm
Revolution:	360°/s
Axis acceleration:	1,200°/s ²
Position accuracy:	15" (0.0041°)
Position deviation:	10" (0.0027°)

A-axis (Spindle pivoting axis)

Pivoting angle:	220° (+/-110°)
Pivoting torque:	1.100 Nm
Clamping torque:	6,900 Nm
Revolution:	360°/s
Axis acceleration:	1,200°/s ²
Position accuracy:	15" (0.0041°)
Position deviation:	10" (0.0027°)

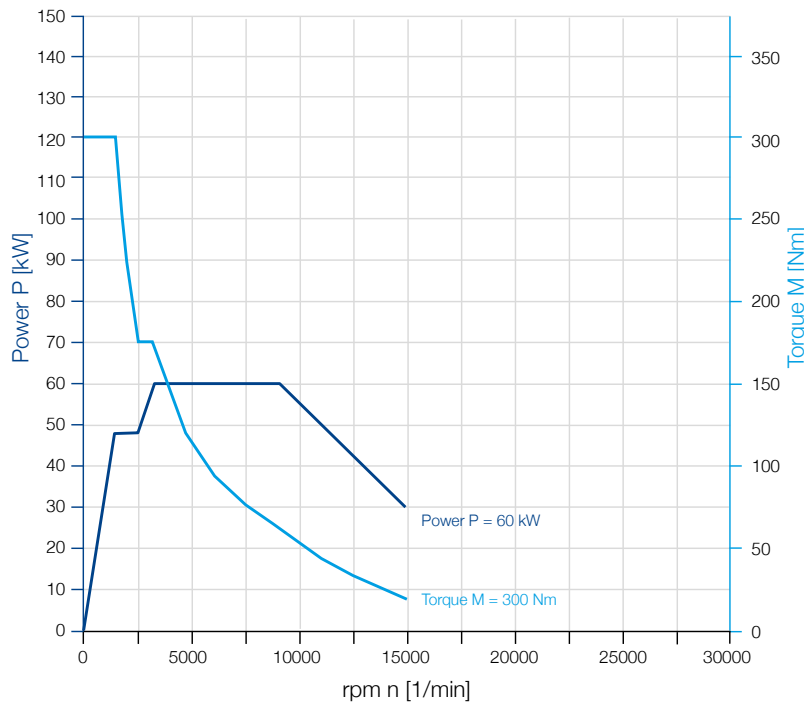


TORQUE MOTORS IN C- AND A-AXIS

DIRECT MEASURING SYSTEM IN C- AND A-AXIS

SPINDLE DATA

High-frequency milling spindle	Tool holding fixture	max. Power [kW]	max. rpm [1/min]	max. Torque [Nm]
HF-Milling spindle	HSK-A100	60	15,000	300



S1 100% DC

Milling spindles with other performances data on request

MILLING HEAD DATA

C-axis (Milling head rotary axis)

Pivoting angle:	550° (+/-275°)
Pivoting torque:	560 Nm / 1.139 Nm
Clamping torque:	3.000 Nm
Revolution:	360°/s
Axis acceleration:	1.200°/s ²
Position accuracy:	15" (0,0041°)
Position deviation:	10" (0,0027°)

A-axis (Spindle pivoting axis)

Pivoting angle:	240° (+/-120°)
Pivoting torque:	550 Nm / 1.100 Nm
Clamping torque:	2.160 Nm
Revolution:	360°/s
Axis acceleration:	1.200°/s ²
Position accuracy:	15" (0,0041°)
Position deviation:	10" (0,0027°)

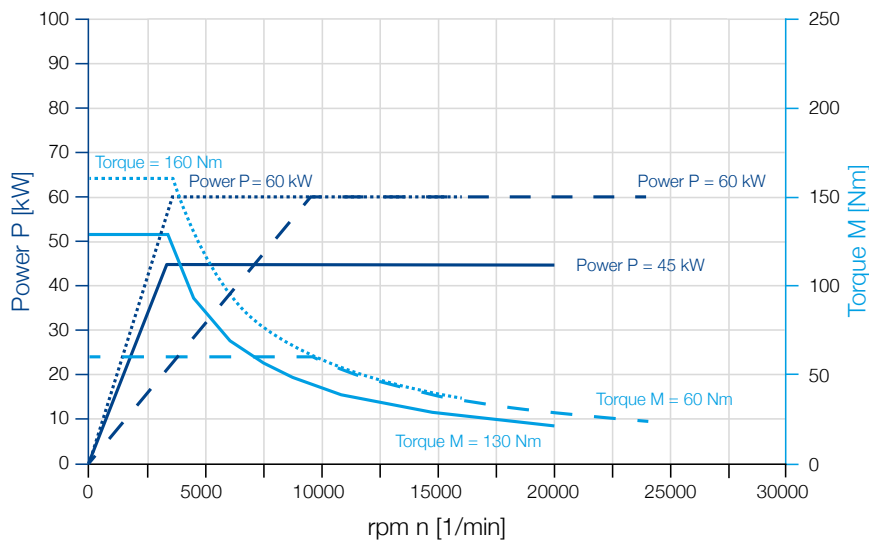


TORQUE MOTORS
IN C- AND A-AXIS

DIRECT MEASURING SYSTEM
IN C- AND A-AXIS

SPINDLE DATA

High-frequency milling spindle	Tool holding fixture	max. Power [kW]	max. rpm [1/min]	max. Torque [Nm]
HF-Milling spindle ———	HSK-A63	45	20.000	130
HF-Milling spindle - - - -	HSK-A63	60	24.000	60
HF-Milling spindle	HSK-A100	60	16.000	160



S1 100% DC
Milling spindles with
other performances
data on request



HEADQUARTER

FOOKE GmbH

Raiffeisenstraße 18-22
46325 Borken

+49 (0) 2861 8009 - 222
sales@fooke.de

www.fooke-machines.com



FOOKE - LOCATIONS
Find the contact person.